



GOLDEN EAGLE LUXURY TRAINS

VOYAGES OF A LIFETIME BY PRIVATE TRAIN™



REPUBLICS OF THE SILK ROAD

APRIL 3 - APRIL 16, 2024
OCTOBER 5 - OCTOBER 18, 2024



GOLDEN EAGLE LUXURY TRAINS

REPUBLICS OF THE SILK ROAD

ALMATY - LAKE ISSYK-KUL - BISHKEK - TASHKENT - KHIVA
ASHGABAT - MERV - BUKHARA - DUSHANBE - SHAHRISABZ - SAMARKAND
MARGILAN - ANDIZHAN - OSH - KOKAND - TASHKENT



NEW FOR 2024

A dazzling exploration of the lands where civilisation began, and the great religious and political ideologies were born.

Journeying aboard the *Golden Eagle*, we will travel through the magnificent “Five Stans” - a fascinating patchwork of countries, stitched together by a shared history of Sovietisation, yet fiercely independent in identity.

From the magnificent mosques and bustling bazaars of Uzbekistan and Turkmenistan to the breath-taking verdant expanse and ethereally tranquil landscapes of Tajikistan and Kazakhstan, this incredible 14-day adventure is your invitation to one of the world’s greatest train journeys.



GOLDEN EAGLE LUXURY TRAINS

REPUBLICS OF THE SILK ROAD



Tour Schedules

April 3 - April 16, 2024
October 5 - October 18, 2024

Daily Tour Itineraries

DAY 1	Almaty	DAY 9	Dushnabe
DAY 2	Almaty	DAY 10	Shahrisabz
DAY 3	Lake Issyk-Kul & Bishkek	DAY 11	Samarkand
DAY 4	Tashkent	DAY 12	Margilan, Andizhan & Osh
DAY 5	Khiva	DAY 13	Kokand
DAY 6	Ashgabat	DAY 14	Tashkent
DAY 7	Merv		
DAY 8	Bukhara		

Accommodation

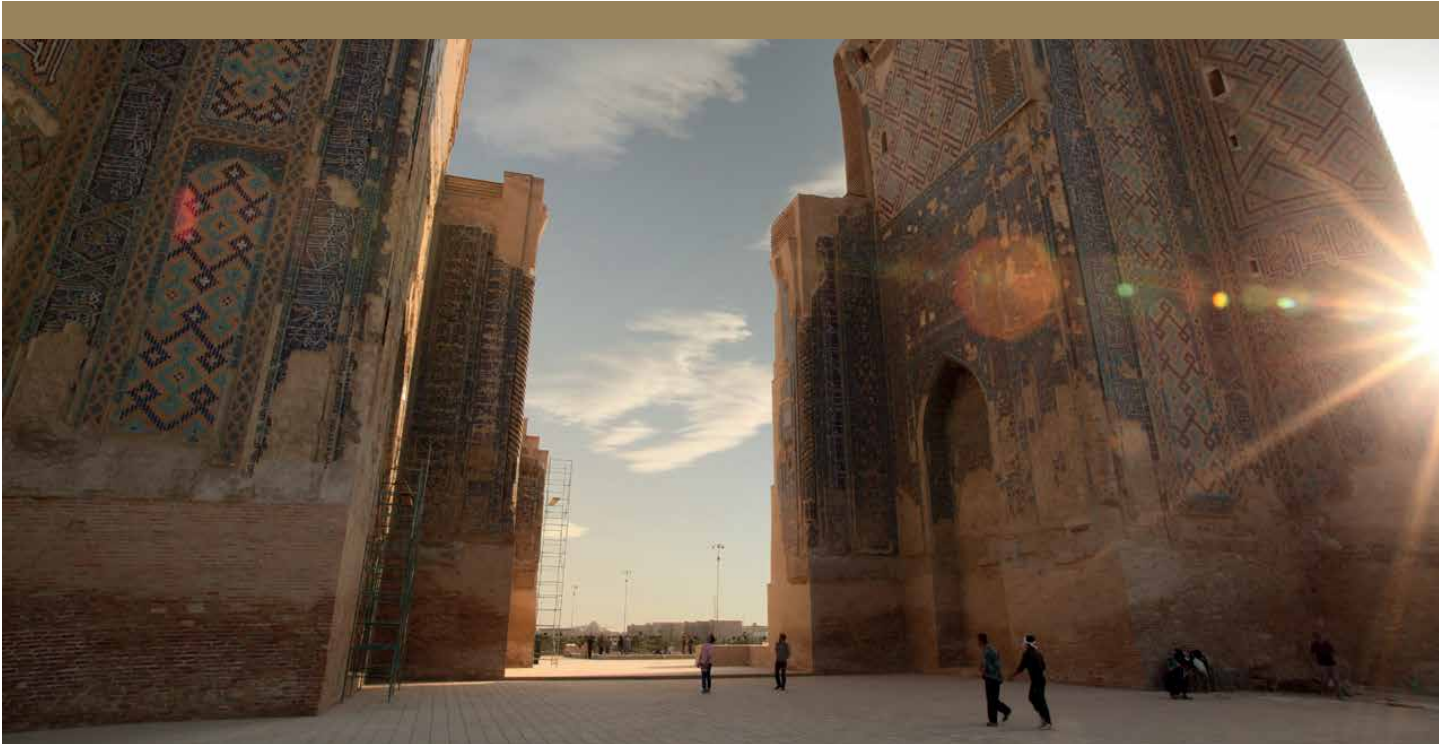
- 🏠 1 hotel night in Almaty
- 🚂 12 nights on board the *Golden Eagle*

ALMATY - LAKE ISSYK-KUL - BISHKEK - TASHKENT - KHIVA
ASHGABAT - MERV - BUKHARA - DUSHANBE - SHAHRISABZ - SAMARKAND
MARGILAN - ANDIZHAN - OSH - KOKAND - TASHKENT



GOLDEN EAGLE LUXURY TRAINS

WHAT'S INCLUDED



Finest Rail Accommodation

- ✦ Private en-suite accommodation
- ✦ 24-hour cabin attendant service
- ✦ Evening turndown service
- ✦ Complimentary tea, coffee and bottled water in-cabin 24 hrs a day
- ✦ Robes, slippers and luxury toiletries in-cabin
- ✦ Complimentary bottle of vodka in your cabin

Off Train Excursions Programme

- ✦ Full guided off-train excursions programme
- ✦ Personal Headsets to hear the professional guide's commentary
- ✦ Bottled water during excursions
- ✦ Authentic dining experiences in local restaurants with a generous drinks allowance, including international wines

Golden Eagle Difference

- ✦ Experienced Tour Manager
- ✦ On board Doctor - English speaking
- ✦ Luggage portorage - from the time you are met at the airport until your departure
- ✦ No tipping policy
- ✦ Arrival and departure transfers
- ✦ High quality *Golden Eagle* embroidered backpack (one per cabin)
- ✦ Detailed *Golden Eagle* route map
- ✦ Stimulating on board talks with our special Guest Lecturer, Major Gordon Corrigan

On-Board Inclusions

- ✦ Breakfast, lunch and dinner daily - starting with dinner on first day and finishing with breakfast on last day
- ✦ Generous drinks allowance, including international wine, with lunch and dinner
- ✦ Gala Caviar Dinner on board the *Golden Eagle*
- ✦ In-cabin breakfast option to start the day
- ✦ Afternoon tea and cakes on board the *Golden Eagle*
- ✦ In-suite dining option for Imperial Suite guests
- ✦ Inclusive drinks packages for Gold Class & Imperial Suite guests
- ✦ Tea, coffee, bottled water, soft drinks and local beer in the Bar Lounge Car
- ✦ Stimulating on board talks
- ✦ Resident pianist in Bar Lounge Car



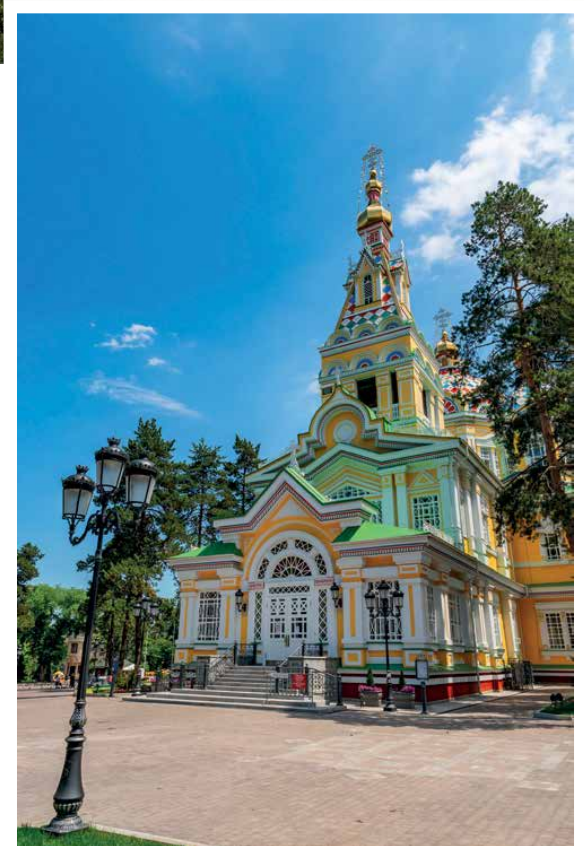
DAY 1 **ALMATY**
KAZAKHSTAN

Arrive at Almaty Airport, where you are met and transferred to the stylish five-star Intercontinental Hotel. On your first evening in Almaty, you will be invited to a champagne drinks' reception before our exclusive Welcome Dinner. Specially selected international wines are included with dinner, as with all meals during the tour.

DAY 2 **ALMATY**
KAZAKHSTAN

Almaty is the largest city in Kazakhstan and is notable for its wide tree-lined boulevards. Surrounded by the majesty of the Tien Shan Mountains, this beautiful city derives its name from 'alma' meaning 'apple'.

Just a short distance from the city, apple orchards thrive in abundance. Our morning city tour includes a visit to Panfilov Park where we visit the Zenkhov Cathedral which was built entirely of wood.





DAY
3

LAKE ISSYK-KUL AND BISHKEK

KYRGYZSTAN

This morning, we will enjoy a guided tour of the open-air Museum of Petroglyphs at Lake Issyk-Kul, a sacred site used by the Saka priests for sacrifices and other rites to the sun god. Some of the petroglyphs date from the Bronze Age with later engravings dating to the 10th century. Following this, we are treated to a breathtaking flight demonstration of Eagle Hunting, a 4,000-year-old art. You will learn the story of eagle hunting, the characteristics of the Golden Eagle and the fascinating details of this Kyrgyz nomadic tradition.

Originally a caravan rest stop serving the travellers that came through the area along the Great Silk Road, Kyrgyzstan's capital city, Bishkek, is the location of our afternoon sightseeing. Here we will visit the Ala-Too Square, built 1984 to celebrate the 60th anniversary of the Kirghiz Soviet Socialist Republic in Kyrgyzstan and a city tour of the local parks, rich in Soviet history, including statues of Karl Marx and Friedrich Engels and the Memorial for the Red Guards



DAY
4

TASHKENT

UZBEKISTAN

This afternoon we arrive in Tashkent, the capital city of Uzbekistan. We spend time touring this modern Soviet-style city, which was rebuilt following the devastating earthquake of 1966. Our tour of the city includes the Old Town, where traditional homes and religious buildings line the narrow streets. In a small library here we will be privileged to see one of Islam's most sacred relics - the world's oldest Koran. This is followed by a visit to the Railway Museum and the Museum of Applied Arts.



DAY
5

KHIVA

UZBEKISTAN

Today, we travel to the ancient city of Khiva, founded 2,500 years ago. As one of the Silk Road's most important trading posts and now a World Heritage Site, it lies at the crossroads of the routes between Mongolia, Russia, China and Persia. A truly magnificent sight to behold, it rises out of the desert to reveal a wealth of impressive architecture. Stepping back in time, we discover its impressive mosques, madrassas, bazaars and minarets within Khiva's ancient walls.

DAY
6

ASHGABAT

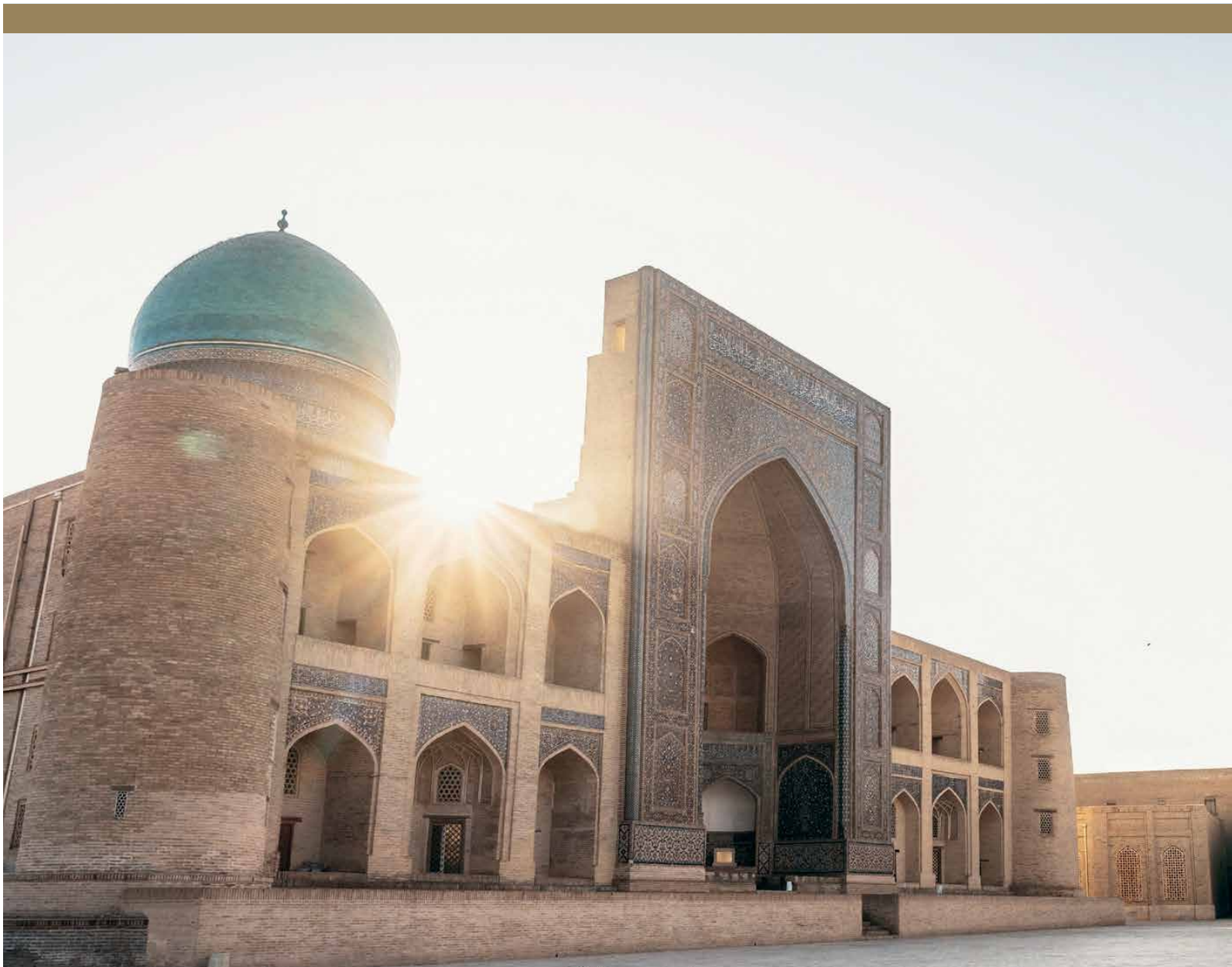
TURKMENISTAN

Ashgabat, the capital of Turkmenistan is known as the 'Las Vegas of the Kara Kum'. Situated between the Kara Kum desert and the Kopet Dag mountain range, Ashgabat is a relatively modern city built upon the ruins of the Silk Road city of Konjikala. The Soviet city was largely rebuilt after the devastating earthquake of 1948.

The city's extravagant fountains, golden domes and towering modern buildings appear strangely incongruous in this desert setting. Highlights on our visit include a visit to the National Museum and Kipchak Mosque.

The *Golden Eagle* makes a brief scheduled stop at Ichoguz, where we have the option to leave the train and make a short journey to Darvaza's famous burning gas crater, a spectacular sight best seen at night.

Located in the middle of the Kara Kum desert where the area is rich in natural gas, the 70-metre wide crater is known by the locals as the 'Door to Hell' and has been burning for over 40 years. A unique experience that is not to be missed.



DAY
7

MERV

TURKMENISTAN

From Mary we transfer to the ancient and mainly unrestored remains of Merv.

Once an important stopping point on the Silk Road, it claims to have briefly been the largest city in the world during the 12th century. 1794 saw the demise of Merv, after the Emir of Bukhara destroyed the dam which the population depended on for its water.



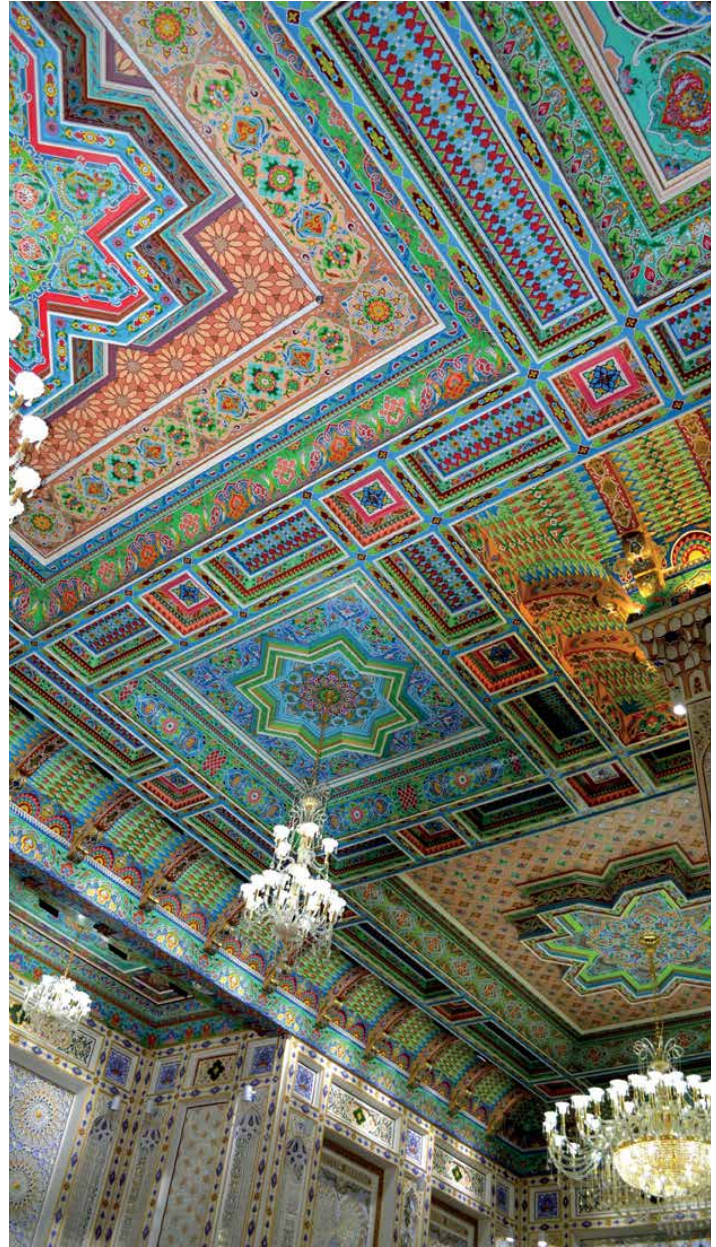
DAY
8

BUKHARA

UZBEKISTAN

Bukhara is quite simply outstanding. Like Khiva, UNESCO sponsored the renovation of much of the city for its 2,500th anniversary in 1999.

The highlight of this wonderful tour is a visit to The Ark, a fortified residence of the Emirs of Bukhara – the despotic and ruthless leaders who ruled until Soviet times. We then travel out of the city to experience the Emir’s enchantingly named ‘Palace of the Moon and Stars’. This evening, weather and time permitting, we will enjoy a barbecue on the station platform before our train departs.



DAY
9

DUSHANBE

TAJIKISTAN

This morning, we visit the capital of Tajikistan, Dushanbe, situated on the Varzob River and its opulent Kohi Navruz Palace. Enjoy a guided tour with a local expert guide, who will tell the fascinating story of the teahouse-turned palace. You will explore each beautiful hall decorated with breathtaking chandeliers, while learning about each of the artists and designers that worked incredibly hard to build and decorate this majestic palace. After the tour, we will enjoy tea and local delicacies in the palace before returning to the *Golden Eagle* to continue our journey.



DAY
10

SHAHRISABZ

UZBEKISTAN

Believed to be the birthplace of Amir Timur, the military prodigy who modelled himself on Genghis Khan and used similar violent methods to conquer and control his Empire, we visit the UNESCO-honoured statue of Amir Timur and his Ak-Saray Palace.

This majestic palace in Shahrisabz took over a quarter of a century to build, and was originally decorated with colourful, highly detailed mosaic but also included delicate calligraphic inscriptions from the Qur'an.

Amid the decorative facing, there is an inscription showing the date 798 (1395 - 1396 AD) which was when the building was completed.

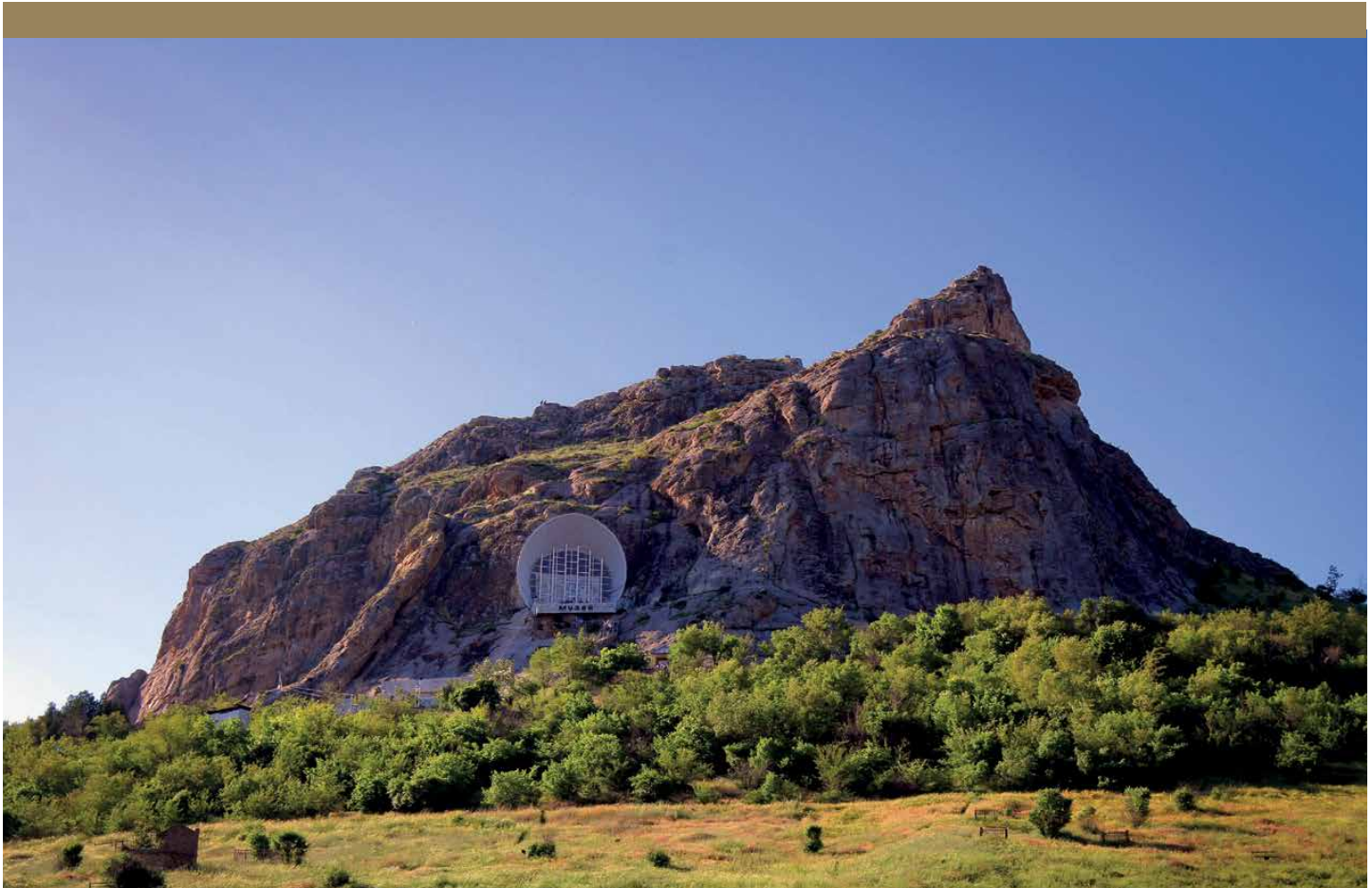
DAY
11

SAMARKAND

UZBEKISTAN

Just the mention of Samarkand instantly conjures up evocative images of the Silk Road, more so than any other town. Founded in the 6th century BC, Samarkand's stunning architecture hints at its former status as one of the most important cities in Asia and is particularly noted for its architectural remains from the 14th to the 17th century, when it flourished as the fabled capital of the Mongol empire of Timur and his successors.

Today, we will visit some of its most significant sites including Registan Square, the refined elegance of the beautifully proportioned Bibi Khanum Mosque and the Ulugh Beg observatory, one of the earliest Islamic astronomical observatories built in 1428. Before dinner we will return to the now illuminated and awe-inspiring Registan Square.



DAY
12

MARGILAN, ANDIZHAN & OSH

UZBEKISTAN & KYRGYZSTAN

This morning, we visit the ancient city of Margilan, famous for its production of silk, considered by many as the best in Central Asia. Here we will visit the Yodgorlik Margilan Factory which is considered the best and only one of its kind in Uzbekistan. Producing 6,000 metres of silk per month, the factory has preserved a manual and traditional method of silk production. We will explore the whole process of making silk from the mulberry trees used to feed the silkworms to the hardworking staff hand weaving the colourful ikat fabric on traditional looms.

Our next stop is the town of Andizhan, dating back to the 9th century. The city is renowned as the birthplace of Zahiruddin Babur in 1483. He was a descendant of Amir Timur, who was once the ruler of this area. During our short visit we explore the Jami Madrasah and mosque, one of the biggest religious complexes in the region, decorated with beautiful geometric patterns of pandjara and Islamic inscriptions.

Late afternoon we arrive in Osh, a popular destination for Muslim pilgrimages as it is home to the sacred Sulayman

Mountain, visible from all areas of the city and named in honour of the Qur'anic Prophet Solomon. Our Freedom of Choice touring options include a walking tour of the city, taking in spectacular Soviet mosaics, murals, and public art, plus a visit to some of the major architectural sites and monuments honouring World War Two soldiers and Chernobyl victims. Alternatively, you can enjoy a traditional bread making class. Bread is an important part of the local diet and across Kyrgyzstan it not only varies by its shape, but also by its taste, and the unique way in which it is baked.





DAY
13

KOKAND

UZBEKISTAN

Kokand is the main transportation junction in the Fergana Valley and is located at the crossroads of the two main ancient trade routes. It is known that each of the Khanates of Turan had their own impressive palace. One of these architectural monuments is the citadel of the last Kokand Khan, Khudayar Khan.

Today, we will visit the Khudayar Khan Fortress and its remaining buildings and courtyards, the best way to understand not only the history of the buildings but also the lives and times of Khudayar Khan, his wives and his family. We will also have an opportunity to visit the museum displaying jewellery, clothing and metalware.

This evening we enjoy our Farewell Dinner on board the *Golden Eagle* as we return to Tashkent.



DAY
14

TASHKENT

UZBEKISTAN

After breakfast onboard the *Golden Eagle*, you will be transferred to the airport for your onward flight.







GOLDEN EAGLE LUXURY TRAINS

WHAT'S INCLUDED IN THE TOUR PRICE

As far as possible our tours are all-inclusive with no hidden extras. What follows are all those elements which are included in the tour price.

The only extra items you may need to budget for include personal expenses such as International and Internal flights that are not included in the itineraries, visa costs, insurance, selected drinks from the Bar Lounge Car and laundry.

EXPERIENCED TOUR MANAGERS

Our experienced Tour Managers are selected for their travel knowledge, and their linguistic and organisational abilities allowing you to relax and enjoy your rail cruise. We receive exceptional passenger comments about our Tour Managers and their aim is to ensure you enjoy every minute of your holiday.

ARRIVAL & DEPARTURE AIRPORT TRANSFERS

Arrival and departure transfers are included.

HOTEL AND ON BOARD ACCOMMODATION

Although you will spend much of your time sightseeing or relaxing in the train's public areas, you will find your cabin a welcome retreat at the end of a rewarding day. All hotels are of five-star standard, or the best available.

DRINKS WITH MEALS

A generous drinks allowance, both alcoholic and non-alcoholic, is included with lunch and dinner on and off the train.

BREAKFAST, LUNCH AND DINNER DAILY

All meals are included, starting with dinner on the first day and ending with breakfast on the last day. All departures feature one or two uniquely designed

Restaurant Cars where you can enjoy the excellent waiter-served food and wine. Several times during the tour we will also sample authentic local cuisine with wine and a selection of drinks off the train, which is also included in the tour price.

ON BOARD SERVICE

You can expect service which is attentive, friendly and unintrusive. Your car attendants provide 24-hour housekeeping and bedding turndown services, with one attendant always on duty to assist you and to ensure you are comfortable in your cabin. Complimentary tea, coffee and bottled drinking water are available in your cabin 24 hours a day.

GUIDED OFF-TRAIN EXCURSIONS

The history and culture of the places we visit on our rail cruises will come alive through our expert local guides. All our tours include a wide-ranging sightseeing schedule to make the most of the time you have off the train and bring you closer to the culture, people and history of your destinations. We believe it is the special little touches that help create magical memories.

PERSONAL HEADSETS

On all the off-train excursions, to enhance your enjoyment and insights into the places you visit, you will be

provided with a lightweight personal headset on which to listen to your tour guide as you take in the sights. The range of the headset means that you do not need to worry about missing any of the guide's commentary on your excursion, even if you prefer to wander away from the group.

ON BOARD DOCTOR AND MEDICAL FACILITIES

To give you peace of mind our tours are accompanied by a doctor who travels with us for the entire journey; so you can rest assured that medical assistance is always available. On call 24 hours a day, the doctor is on hand to give primary care as required. In almost every case, the doctor will be English-speaking and registered with the General Medical Council in the UK.

LUGGAGE HANDLING

As you only have to unpack once your luggage and belongings will stay with you on the train throughout the journey but, wherever necessary, portorage is included between the hotels and stations.

ALL GRATUITIES

You will not have to worry about tipping on or off the train on your rail journey with *Golden Eagle Luxury Trains* as all gratuities are included in the tour price.

DINING ON BOARD THE GOLDEN EAGLE



A world of culinary delights.

A particular delight of the *Golden Eagle* is our beautifully appointed restaurant cars, a delightful venue in which to enjoy meals skillfully prepared by our Executive Chef and his on board restaurant team using the very best in ingredients, locally sourced wherever possible. Depending on the number of guests on board, one or two of our restaurant cars will be on every departure.

Enjoy the delights of an on-train breakfast each morning – the wonderful aroma of freshly-baked bread permeates the dining car, a wide selection of pastries, cereals, freshly squeezed orange juice and cold plates are available from our bountiful buffet. Alternatively enjoy a cooked breakfast brought to your table by our waiting staff, all complemented by steaming hot tea and coffee.

If you are in need of a more relaxed start to the day, then opt for our continental breakfast basket with tea or coffee to enjoy at leisure in your cabin.

For lunch and dinner, you will be welcomed by our resident waiting staff and enjoy fine food, great wines and attentive

service in the welcoming atmosphere of the dining car. We offer a culinary experience that reflects the very essence of the countries we travel through, as well as international cuisine. Vegetarian and other dietary options are also available.

All our meals at lunch and dinner are complemented by an excellent choice of wines from around the world, personally selected by our Company Founder, Tim Littler, along with mineral water, beer and soft drinks as well as – naturally – vodka. For that special occasion we also have available to purchase a selection of premium fine wines priced between \$50 and \$795 per bottle.

Meals on board are a relaxed affair as the restaurant cars can accommodate all our guests in a single sitting. Throughout the journey there is an informal dress code, so you can enjoy our culinary experiences in convivial and relaxed surroundings and with our open seating policy you can dine wherever, and with whomever, you please.

RELAX AND UNWIND IN OUR BAR LOUNGE CAR



The social heart of the *Golden Eagle* is the Bar Lounge Car, a great place to relax and settle into the unhurried pace of life on board.

Unwind in comfortable surroundings and watch the world go by as you get to know your fellow passengers and begin long-lasting friendships. Perhaps read a novel from our library to pass away the time or challenge your friends to a game of bridge.

Enjoy the delights of morning or afternoon tea in the Bar Lounge Car with delicious cookies freshly baked by our chefs.

It is also here that our Tour Manager will also organise a programme of activities. Passengers will receive printed daily itineraries throughout the tour detailing train arrival and departure timings, latest weather forecasts for the next

destination and information on the following day's excursions and activities. The occasional day will be spent entirely on board and the Bar Lounge Car and Restaurant Cars will host an entertaining and enlightening range of activities such as popular local folk songs and engaging talks by expert lecturers on local history and culture.

In the evening enjoy the sounds of the resident pianist playing on the baby grand piano in the Bar Lounge Car. From time to time we also host special concerts and every night the bar stays open until the last person leaves.





GOLDEN EAGLE LUXURY TRAINS

YOUR ON BOARD ACCOMMODATION

The *Golden Eagle* is your luxurious hotel-on-wheels.

Unpack just the once and settle into your well-appointed and comfortable en-suite cabin as you begin this voyage of a lifetime. One of your cabin attendants, available at all times, will be on hand to look after all of your needs.

The *Golden Eagle*, comprising three categories of cabins, featuring state-of-the-art amenities, and all offering en-suite facilities, is the only private train of its kind operating in this part of the world. All cabins have been fully refurbished in 2018.

Our Imperial Suites are the most spacious cabins on the *Golden Eagle* and on any train. The Gold and Silver Class accommodation has been cleverly designed to maximise the available space as cabins convert from a sitting area by day into comfortable sleeping accommodation by night.

On the occasions where we travel by day, your cabin provides a calm, personal space in which to read,

enjoy a movie or simply watch the landscape unfold through the large picture window with the facility to adjust the air-conditioning for your own personal comfort.

All three classes of cabin benefit from an evening turndown service and the services of a cabin attendant who is on call 24 hours a day.

The on board cabin attendants are highly regarded by our guests for their impeccable service. In each cabin you will also find an excellent selection of luxury shower gels and shampoos, complemented by premium bath robes, slippers and a hairdryer.



GOLDEN EAGLE LUXURY TRAINS

IMPERIAL SUITES



Exemplary service starts with a complimentary bottle of Dom Perignon champagne when you board the train to toast the start of your wonderful adventure.

Imperial Suites are the most spacious cabins available on board the *Golden Eagle* measuring 120 sq ft (11.1 sq metres) and benefiting from a large and luxurious UK King Size bed as well as a lounge area with dressing table.

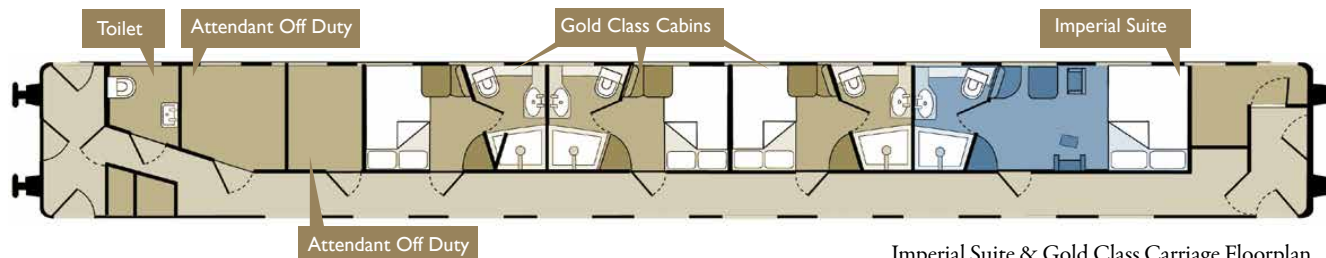
Imperial Suite facilities include a private en-suite bathroom with power shower and the luxury of underfloor heating, individual air-conditioning, wardrobe, DVD/CD player with LCD screen, complimentary fully stocked minibar, safe, small library and two large picture windows to watch the world go by.

Imperial Suite guests will also benefit from the option of a private guide and chauffeured car service in most of the places

we visit along the route. However, in locations where there are a limited number of experienced and qualified tour guides available, we may offer a shared car service among Imperial Suite guests. Guests also benefit from the inclusion of drinks from the Standard and Premium Bar List (excluding premium wines) in the Bar Lounge Car, a laundry service and upgraded room types at the hotels which are featured in the itinerary.

IMPERIAL SUITE DIMENSIONS

CABIN AREA	120 sq ft (11.1 sq m)
CABIN LENGTH	17ft 4ins (5.3m)
CABIN WIDTH	6ft 7ins (2m)
BED WIDTH	5ft (1.5m)
BED LENGTH	6ft 2ins (1.9m)
CABINS PER CAR	1 Imperial Suite (+ 3 Gold Class Cabins) or 1 Imperial Suite (+ 4 Silver Class Cabins) or 1 Imperial Suite (Imperial Suite Carriage)



Imperial Suite & Gold Class Carriage Floorplan
(Imperial Suite also available in Silver Class Carriage)

IMPERIAL SUITE SPECIFICATION

- Sleeps 2 in UK King Size bed
- Sitting area
- Remote controlled air-conditioning and heating
- Recessed lighting and wardrobe
- Dressing table
- Personal safe
- Complimentary minibar
- DVD/CD player with LCD screens
- Private en-suite bathroom with full power shower & underfloor heating
- Bathrobes, slippers, hairdryer & luxury toiletries provided
- Towels and linens changed every second day or daily on request
- In-cabin dining available on request
- Complimentary tea, coffee and mineral water available at all times
- Drinks from the Bar Lounge Car included from the Standard and Premium Bar List (excluding Premium Wine List)
- Private car and guide options in selected cities for off-train excursion programme
- Laundry service included



GOLDEN EAGLE LUXURY TRAINS

GOLD CLASS

GOLD CLASS DIMENSIONS

CABIN AREA	77sq ft (7sq m)
CABIN LENGTH	11ft 8ins (3.6m)
CABIN WIDTH	6ft 7ins (2m)
LOWER BED WIDTH	4ft 5ins (1.35m)
UPPER BED WIDTH	2ft 9ins (85 cm)
BED LENGTH	6ft 2ins (1.9m)
CABINS PER CAR	5

SPECIFICATION

- Sleeps 2 in either standard double bed or upper and lower bunk style
- Remote controlled air-conditioning and heating
- Recessed lighting and wardrobe
- Personal safe
- Private en-suite bathroom with full power shower & underfloor heating
- Bathrobes, slippers & luxury toiletries provided
- DVD/CD player with LCD screens
- Towels and linens changed every second day or daily on request
- Complimentary tea, coffee and mineral water in cabin available at all times
- Drinks in the Bar Lounge Car included from the Standard Bar List
- Laundry service available at an additional charge

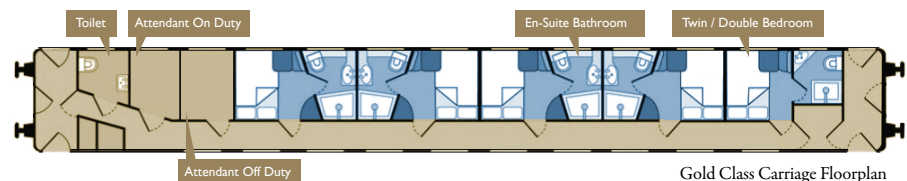
Note: The fifth compartment in Gold Class is of a slightly different layout with an area measurement of 68 sq ft but with all the above facilities. It is usually reserved for single passengers or at a reduced rate for twin share passengers. Late bookings may be allocated this cabin and a reduced rate will be applicable. This information will be advised prior to departure.



At 77 sq ft (7 sq metres) Gold Class cabins are extremely well-proportioned and have everything from a private bathroom with separate power shower cubicle and underfloor heating to a DVD/CD player, LCD screen, safe, individual air-conditioning, wardrobe, large picture window as well as featuring a double lower bed and a single upper bed.

Guests in Gold Class benefit from complimentary drinks off the Standard Bar List in the Bar Lounge Car.

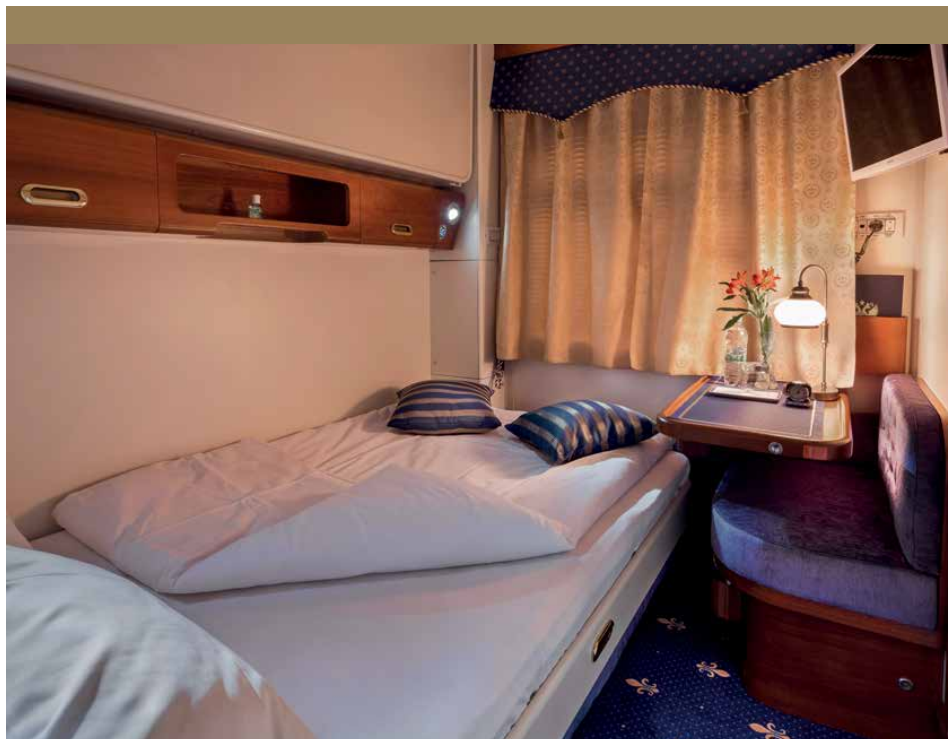
Configuration and styles of all cabins may vary





GOLDEN EAGLE LUXURY TRAINS

SILVER CLASS



SILVER CLASS DIMENSIONS

CABIN AREA	60sq ft (5.5sq m)
CABIN LENGTH	8ft 8ins (2.6m)
CABIN WIDTH	6ft 7ins (2m)
LOWER BED WIDTH	3ft 6ins (1.1m)
UPPER BED WIDTH	2ft 9ins (85 cm)
BED LENGTH	6ft 2ins (1.9m)
CABINS PER CAR	6

SPECIFICATION

- Sleeps 2 in lower small double bed or bunk style
- Remote controlled air-conditioning and heating
- Recessed lighting and wardrobe
- Personal safe
- Private en-suite bathroom with 'wet room' style shower and toilet
- Bathrobes, slippers and luxury toiletries provided
- DVD/CD player with LCD screens
- Towels and linens changed every second day or daily on request
- Complimentary tea, coffee and mineral water available at all times
- Laundry service available at an additional charge

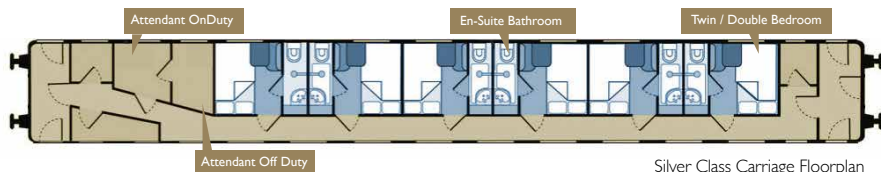


Silver Class cabins, which are more compact at 60 sq ft (5.5 sq metres), feature a small double lower bed and a single upper bed as well as DVD/CD player, LCD screen, safe, individual air-conditioning, wardrobe and large picture window.



The Silver Class cabins have a private en-suite wet room with a washbasin, toilet and shower.

Configuration and styles of all cabins may vary





GOLDEN EAGLE LUXURY TRAINS

IMPORTANT INFORMATION ABOUT OUR TOURS



WHAT IS INCLUDED IN THE PRICE?

All accommodation as per the itinerary; both on board the train and in hotels; all meals starting with dinner on the first day; a generous allowance of wine, beer, soft drinks and tea and coffee with all lunches and dinners both on and off the train; all arrival and departure transfers; guided off-train sightseeing excursions; the services of experienced tour leaders; complimentary tea, coffee and bottled water 24 hours a day, all gratuities; and in most cases a doctor travelling with the group.

WHAT IS NOT INCLUDED IN THE PRICE?

International and domestic airfares (unless stated as part of the itinerary); visa and excess baggage charges; travel and medical insurance. Personal expenses such as drinks in the Bar Lounge Car or laundry. On some tours there may also be an occasional optional activity that needs to be paid for locally.

PASSPORT AND VISA INFORMATION

It is your responsibility to be in possession of a valid passport and visa for your trip. A passport with a minimum validity of 6 months is required for all our rail tours. Many of the remote and exotic countries we visit require visas. Visa costs are not included in the price of the tour and these must be purchased independently. This can often be an involved and time-consuming process and, as this

is such an important aspect of your holiday, we can assist you with advice and any supporting documentation. Detailed visa advice, specific to your nationality, is issued approximately 4 months prior to departure. We do not take any responsibility for any passengers in possession of incorrect or invalid visas. Please contact our Customer Services department for help and information. For customers in the United Kingdom we can put you in contact with our recommended visa support agency.

ACCESS TO WI-FI

On the *Golden Eagle* there is a Wi-Fi box on board, powered by a 4G sim. Coverage is limited and will usually be available as we pass through larger cities/towns. However, on all tours we aim to provide internet access in a local hotel or restaurant for passengers at least every other day. Our Tour Manager will keep you informed of all the opportunities to use Wi-Fi and provide password access when necessary.

INSURANCE

It is a booking condition that you must be fully insured for any medical expenses that may be incurred whilst travelling. For UK passengers comprehensive travel insurance policies can be obtained from Campbell Irvine.

VACCINATIONS

As our rail journeys visit areas of developing countries, we strongly advise that you consult your doctor or a medical centre for specific health advice.

ON BOARD DOCTOR

We provide a doctor on board all our tours who is available for emergency medical situations 24 hours a day. They carry a fully stocked medical kit but it is your responsibility to ensure that you obtain any vaccinations, prescribed and precautionary medicine for the countries you are visiting before travelling with us.

INTERNATIONAL & DOMESTIC FLIGHTS

Flights are not included (unless part of the itinerary) but we can advise fares and book them for you if the flights originate in the UK. Please note that we do not advise that you book flights more than 60 days in advance of the tour departure date (see Booking Conditions).

HOTEL ACCOMMODATION

Hotel accommodation as described in the tour itinerary is included in the price of the tour. All hotels are of a 5-star standard or best available. Room upgrades are available on request, subject to availability and at an additional cost.

ITINERARIES

Accommodation and tour itineraries, including the provision of guest speakers and steam haulage, are subject to change at any time due to circumstances beyond our control. Every effort will be made to operate tours as advertised and as per the rail timings received. On selected departures where group numbers are small, a shorter formation of the *Golden Eagle* will operate as appropriate to the number of guests. We attach our carriages to the rear of a regular train each day, however your on board experience will be unaffected, there being no connection between our train and the main train.

SPECIAL REQUESTS

We pride ourselves on offering you a personalised and knowledgeable service and will make every effort to meet any of your special dietary, room or travel requests. Also we are very happy to cater for any special occasion or anniversary that you are celebrating whilst you are with us. Please advise us at the time of booking.

SINGLE TRAVELLERS

Many of our guests are single travellers and of course passengers travelling as small groups, families, couples or singles are all equally welcome.

GRATUITIES

All gratuities are included in the tour price and we strongly encourage passengers to refrain from offering gratuities to crew/hoteliers/drivers etc. We would prefer passengers to inform our management of any exceptional service received, and we will reward accordingly.

LANGUAGE

The primary tour language will be English. French and Spanish speaking guides are available on selected departures or on request at an additional cost. Other languages e.g. German may be available on request and at an additional cost. Please contact us for more information.

MEETING POINTS

Details of hotel/airport meeting points will be printed on the tour vouchers and departure packs that will be sent to you one month prior to departure.

MINIMUM PASSENGER REQUIREMENTS

All our rail tours require a minimum number of passengers to operate. Should this not be reached, we will run a modified service of carriages attached to regular service trains to accommodate a smaller group or offer an alternative tour. If no alternative is suitable a full refund will be offered. Reduced numbers mean smaller and more intimate groups, and a shorter train, as we leave unfilled cars behind. On a number of tours we will be combining our *Golden Eagle* carriages with regular trains departing at similar times. The on board experience and off-train tours will be unaffected and, as there will be no connection between our carriages and the regular trains, the *Golden Eagle* carriages will remain totally private and you will not notice any difference to the quality, comfort and enjoyment of your holiday.

TRAVELLER HEALTH CONDITIONS

To get the most out of our tours, passengers must be able to walk at least a mile per day at normal walking speed. The traveller confirms that neither he/she has any physical or mental condition or disability that could create a hazard to him/herself or other members of the tour. We reserve the right to refuse travel to anyone who, in the opinion of the tour doctor or tour manager would be incapable of completing the tour or would cause unacceptable delays to the rest of the group. In these circumstances there would be no refund for any unused part of the tour. We also reserve the right to reclaim any costs incurred as a result of providing additional services to cater for their mobility needs e.g. a wheelchair. If in doubt, please call us for advice.

BOOKING CONDITIONS

Our full booking conditions can be found on www.goldeneagleluxurytrains.com

TRAVEL INSURANCE

We believe that your safety and holiday enjoyment are very important, therefore travel insurance is a must whenever you travel abroad.



GOLDEN EAGLE LUXURY TRAINS

Caspian Odyssey

VOYAGES OF A LIFETIME BY PRIVATE TRAIN



YEREVAN - LAKE SEVAN - TBILISI - GORI - UPLISTSIKHE - MTSKHETA - BAKU - CROSS THE CASPIAN SEA
ASHGABAT - DARVAZA GAS CRATER - KHIVA - BUKHARA - SAMARKAND - TASHKENT - ALMATY

Explore the countries on both the eastern and western shores of the Caspian Sea - Armenia, Georgia, Azerbaijan, Turkmenistan, Uzbekistan and Kazakhstan.

With their location at the crossroads of trade, religion, language and the arts, these countries are home to fascinating modern cultures as well as some of the world's most ancient and timeless architecture.

The Caspian Odyssey is a breathtakingly beautiful and remarkable journey as we discover the mysteries, diversity and traditions of this part of the world.

For further information on these tours visit the website at www.gettrains.com

Alternatively, register your interest now with our Reservations Team on +44 (0)161 928 9410 and we will send you the full itinerary and prices.



GOLDEN EAGLE LUXURY TRAINS LIMITED

Denzell House, Denzell Gardens, Dunham Road, Altrincham, Cheshire, WA14 4QF, United Kingdom
Tel: +44 (0)161 928 9410 Email: mail@goldeneagleluxurytrains.com

www.goldeneagleluxurytrains.com

  Golden Eagle Luxury Trains